



STEEL GROUND MOUNTING STRUCTURES FOR SOLAR FARMS



Have you questions ?

CALL

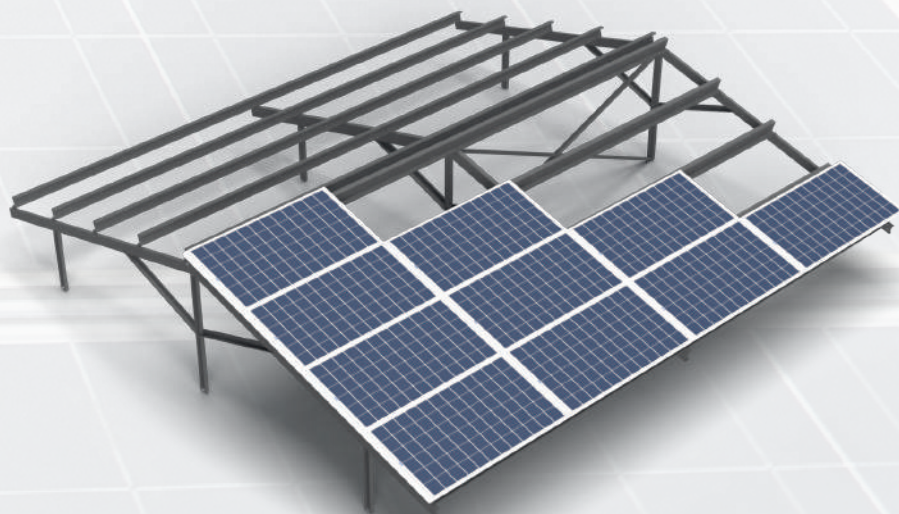
 **+48 608 273 272**



 podkonstrukcjepv@kobexstal.pl

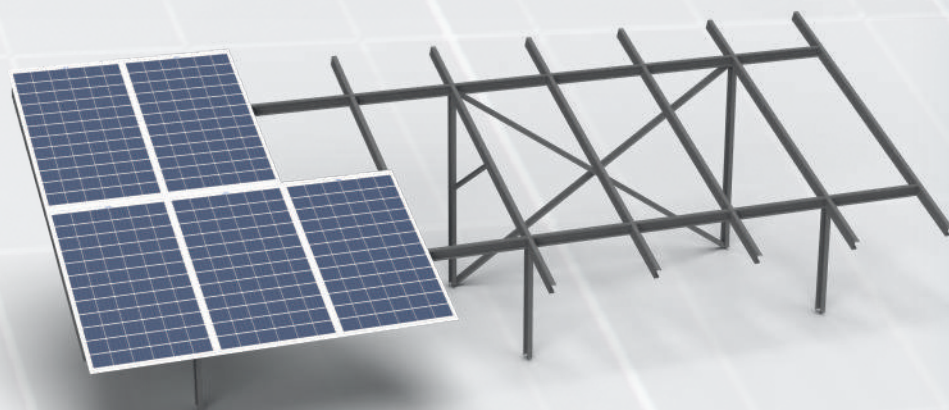
 kobexstal.pl

MOST POPULAR TYPES OF STRUCTURES



KBWZ-4H-M-P32 Three-support structure East-West

Table for 32 panels (2x16) in 4x4 horizontal arrangement. Structure is a 9 poles driven to a depth of 1,5m. To poles are fixed 6 pcs of griders, to the griders are fixed horizontal purlins. The angle of inclination of the panels is 15 degrees.



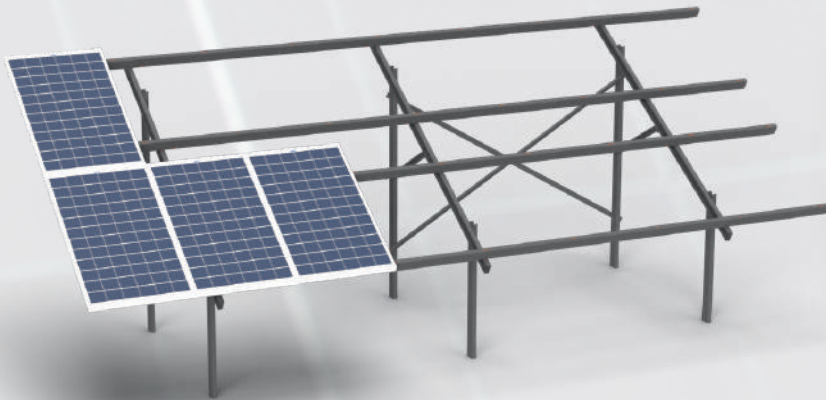
KB-2V-B-P16 Two-support structure for bifacial modules vertical 2x8

Special design - construction elements do not cover the sun from the bottom of the panel, electricity can be effectively produced from the bottom side as well. Panels are fixed to the vertical purlins, horizontal griders placed under half-cut line. Basic structure is a 3 pairs of poles, 2 horizontal griders and vertical purlins for the width of the panel. Poles driven to a depth of 1,5m.



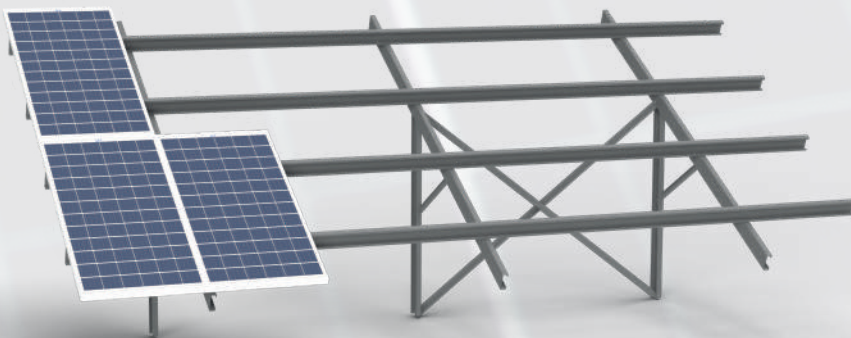
KB-4H-M-P16 Two-support structure horizontal 4x4

Basic structure is a 3 pairs of poles, 3 griders and 5 horizontal purlins. Panels are fixed to the purlins horizontally 4x4. Poles driven to a depth of 1,5m.



KB-2V-M-P16 Two-support structure vertical 2x8

Basic structure is a 3 pairs of poles, 3 griders and 4 horizontal purlins. Panels are fixed to the purlins vertically 2x8. Poles driven to a depth of 1,5m.



KB1-2V-M-P16 Single-support structure vertical 2x8

Basic structure is 3 poles and 3 griders with struts designed for mounting 16 panels arranged 2x8 vertical. To the griders are fixed horizontal purlins. Poles driven to a depth of 1,5m.

Kobex Sp. z o.o. is well known manufacturer in steel constructions industry. Over 10 years of experience and 2000 completed projects in Poland and abroad allowed for the development of business in new directions, including area of photovoltaic structures. We specialize in ground mounting structures for photovoltaic farms. We using construction steel directly from the world's best producers with Magnelis® anti-corrosion coating.

For large solar parks, our steel ground mounting systems offers an optimal cost-benefit ratio. It has been engineered and optimized for low material usage and easy installation.

In 2023 we was awarded again by Forbes Diamonds



KOBEX Sp. z o.o.
36-053 Kamień, ul. Duple 71

Factory is certified with EN1090



ISO 9001: 2015
ISO 45001: 2018
ISO 14001: 2015